

AIS – Automatic Identification System

A collision avoidance system

Gives information on: Vessels, GPS location, name, true heading, MMSI (& call sign), speed, rudder angle.

Uses: VHF frequencies

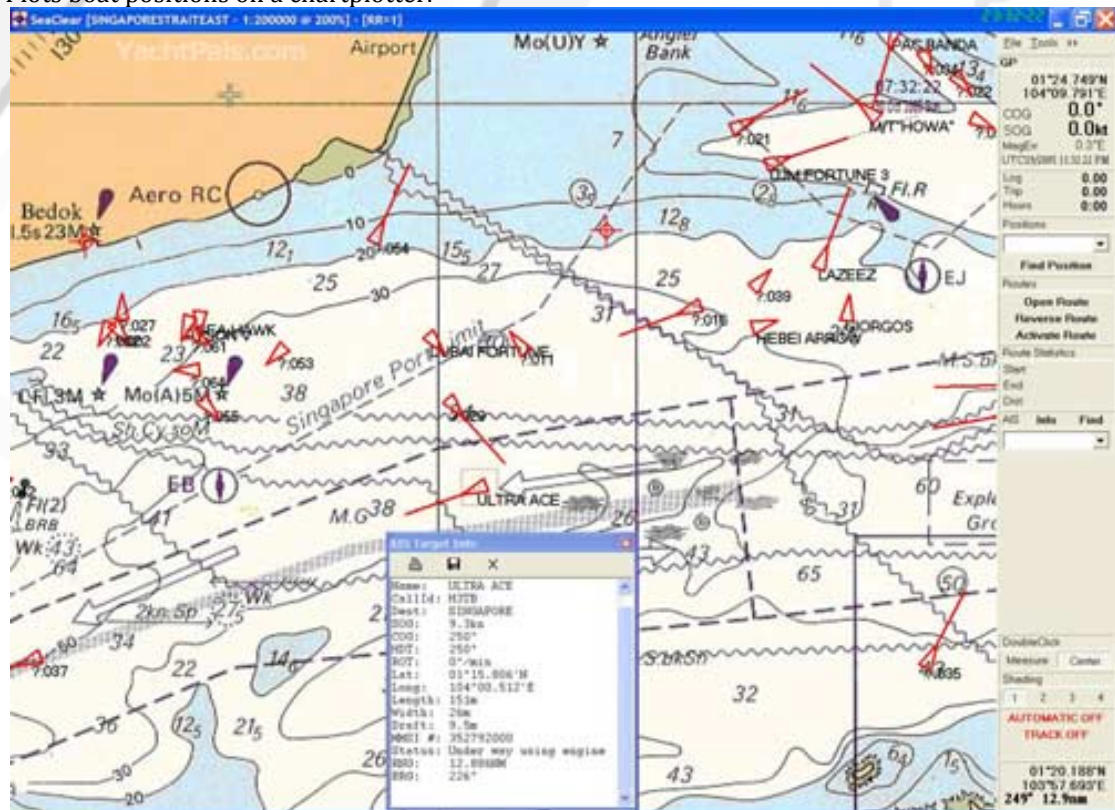
Class A receiver – required on nearly all tugs and commercial ships. Mandatory for vessels over 300 tons & passenger vessels carrying over 12 people. Has screen.

- True heading
- 12 Watt power on VHF
- Outputs up to every 3 seconds
- Alarms if potential collision system

Class B receiver – use on pleasure boats etc. (no display, link to chart plotter or PC)

- Static information only - Name, call sign, MMSI number
- 2 Watt power on VHF
- Transmits every 30 seconds
- Shows vessels in area (up to 20 miles depending on transmission)

Plots boat positions on a chartplotter.



Radar vs. AIS –

AIS Cons:

- Doesn't pick up vessels without AIS fitted
- Can't see rocks, obstructions, piers etc
- Can't see through fog

AIS Pros:

- Can ID vessels
- Can see round corners
- Cheaper to install than radar