

How to find out more about a casualty using AMPLE

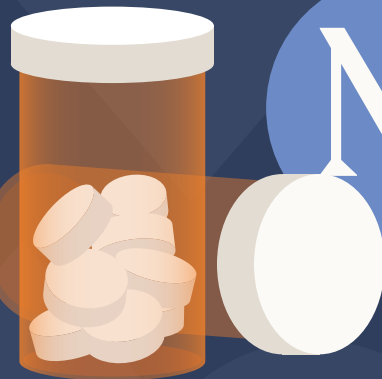
If the casualty is responsive and able to answer your questions, you should try to get as much information about their medical history and current symptoms as possible during the secondary survey. Use the AMPLE acronym to find out the following:

A

If they have any **allergies**.

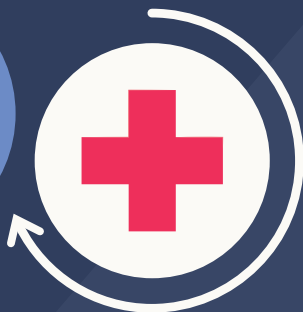


M



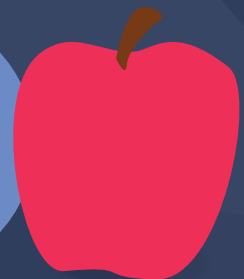
If they take any **medication** frequently, including prescriptions.

P



Any information about their **previous medical history**.

L



When they **last ate** something.

E

What happened leading up to the **event** that caused their injury or illness.

