

RYA Training Conference

#DigitalFirst

SHOREBASED – carousel takeaways

The syllabus has not changed
APEM

Trusted sources

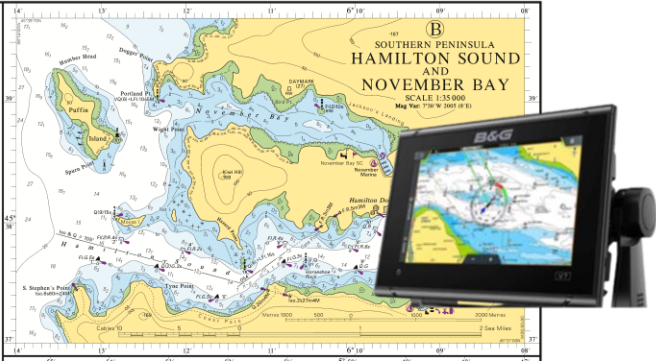
Start with modern sources of information

Prediction or Fact



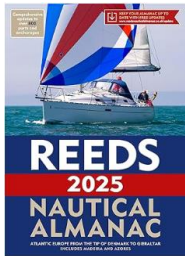
Paper or Digital

- Use appropriate scale



- Vector charts can be customised. Check your settings, particularly units. e.g feet/metres, km/miles etc

- Tidal heights to 2 dec places doesn't mean it's more accurate than to 1 dec place



APPRAISE - PLAN

Prediction ?

OR

Fact ?

Understanding and interpreting modern sources of information

- This is not cheating!

What are your **TRUSTED SOURCES?**

Tidal Streams
Tidal Heights
Pilotage
Regulations
Comms

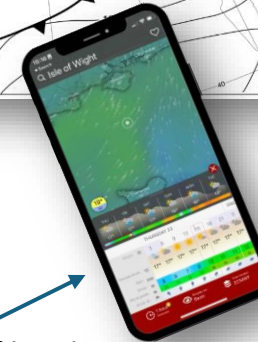
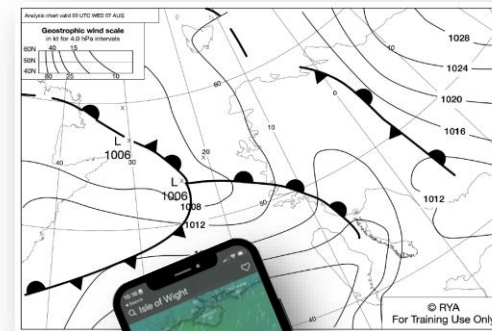
Engage in your voyage

Give a route a meaningful name

Name waypoints

Add notes to waypoint:
- altering course
- radioing the marina

Weather



- Hourly/half hourly predictions doesn't mean it's more accurate.

Inshore waters and strong winds



- Met Office – UK
- ECMWF – Europe
- GFS – USA
- Bureau of Meteorology - Australia

EXECUTE - MONITOR

1.

Referencing the PLAN

Name waypoints:

- what purpose?
- what action?

On track or not?

2.

Independent verification of POSITION

Identify aids to navigation

Be able to verify without a GNSS

(Radar overlay)
(Parallel index)

Pilotage techniques

XTD

3.

Use vectors to **PROJECT** forward appropriate length/timescale

Future tidal stream or height, weather, sea state, traffic?

Do you need to modify your plan?

